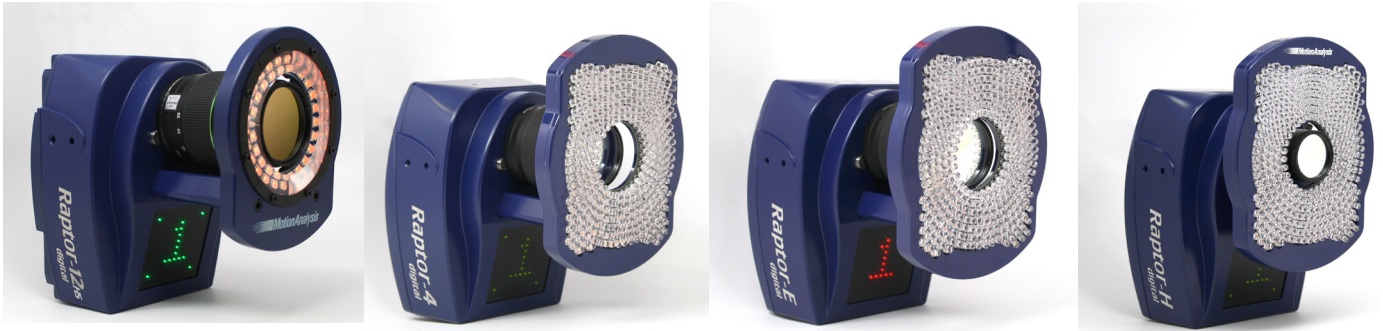


Raptor Camera Series: Outdoor Motion Capture



Powerful, Accurate Motion Capture Data

Motion Analysis Corporation has achieved an industry first with the release of its premier real-time passive optical motion capture cameras, the Raptor Series, which can be used outdoors in full sunlight as well as in harsh indoor lighting without changing any hardware or software.

Motion Analysis has developed exclusive new proprietary image processing software which is embedded in the Raptor cameras. This new, exclusive software addresses the various challenges of working outdoors in direct sunlight as well as indoor environments where reflections and lighting conditions can also affect a capture, while maintaining extreme accuracy and real-time capabilities.

With more than ten times the memory and twenty times the processing power of our previous generation of cameras, the Raptor series represent the ultimate in motion capture capabilities with the industry's lowest latency, highest number of marker throughput, and robust 64-bit software design for real-time applications such as sports performance, virtual environments, and live broadcast. The onboard processing power in the cameras are able to simultaneously process thousands of 2D centroids in full greyscale, in real-time, resulting in accurate, clean motion capture data. The superior design of the camera ringlights allow for deeper and broader visibility while maintaining crystal-clear focus. This translates to fewer cameras being needed than what other companies require for the same size capture area.

The flexibility (indoors and outdoors!), extreme accuracy, low latency and superior processing power combine to make the Raptor series of passive optical motion capture cameras the best choice for today's cost and time-conscious user.

